

Under embargo until 1.00am on Thursday, 31 January 2008

For personal use only. Third parties should not be approached until the embargo is lifted.

CHILD PROTECTION AND OUT-OF-HOME CARE SERVICES
(CHAPTER 15)

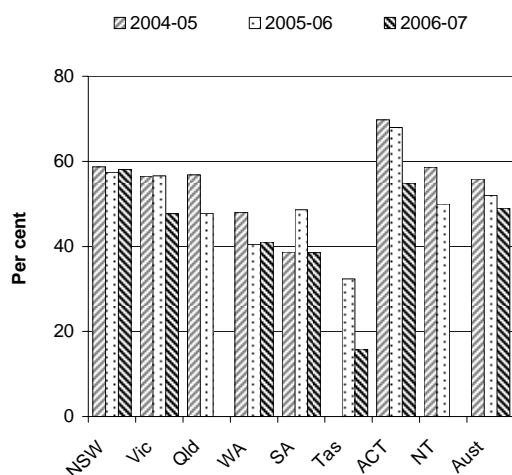
- This chapter reports on the performance of governments in providing child protection, out-of-home care, juvenile justice and supported accommodation and assistance services. This fact sheet focuses on the performance of jurisdictions providing child protection and out-of-home care services.
- Nationally, 32 423 children aged 0–16 years were the subject of a substantiation in 2006-07 (p. 15.9), however the criteria for substantiation vary across jurisdictions. At 30 June 2007, 29 406 children aged 0–17 years were on care and protection orders (p. 15.10) and approximately 28 441 children were in out-of-home care nationally (p. 15.11).
- Total recurrent expenditure on child protection and out-of-home care services was approximately \$1.7 billion across Australia in 2006-07 — a real increase of \$199.8 million (13.7 per cent) from 2005-06 (p. 15.11).

Objectives of Protection and support services

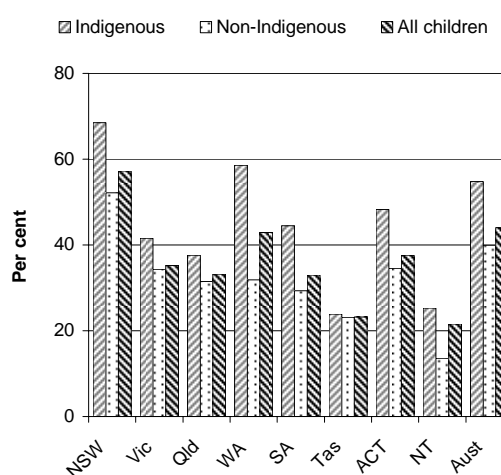
- Child protection services aim to protect children and young people at risk of harm within their family or in circumstances in which the family of the child or young person does not have the capacity to protect them.
- Out-of-home care services aim to provide quality care for children and young people aged 0–17 years who cannot live with their parents for reasons of safety or family crisis.

Selection of results

Proportion of children on a care and protection order exiting care after 12 months or more, who had 1 or 2 placements^a (p. 15.23)

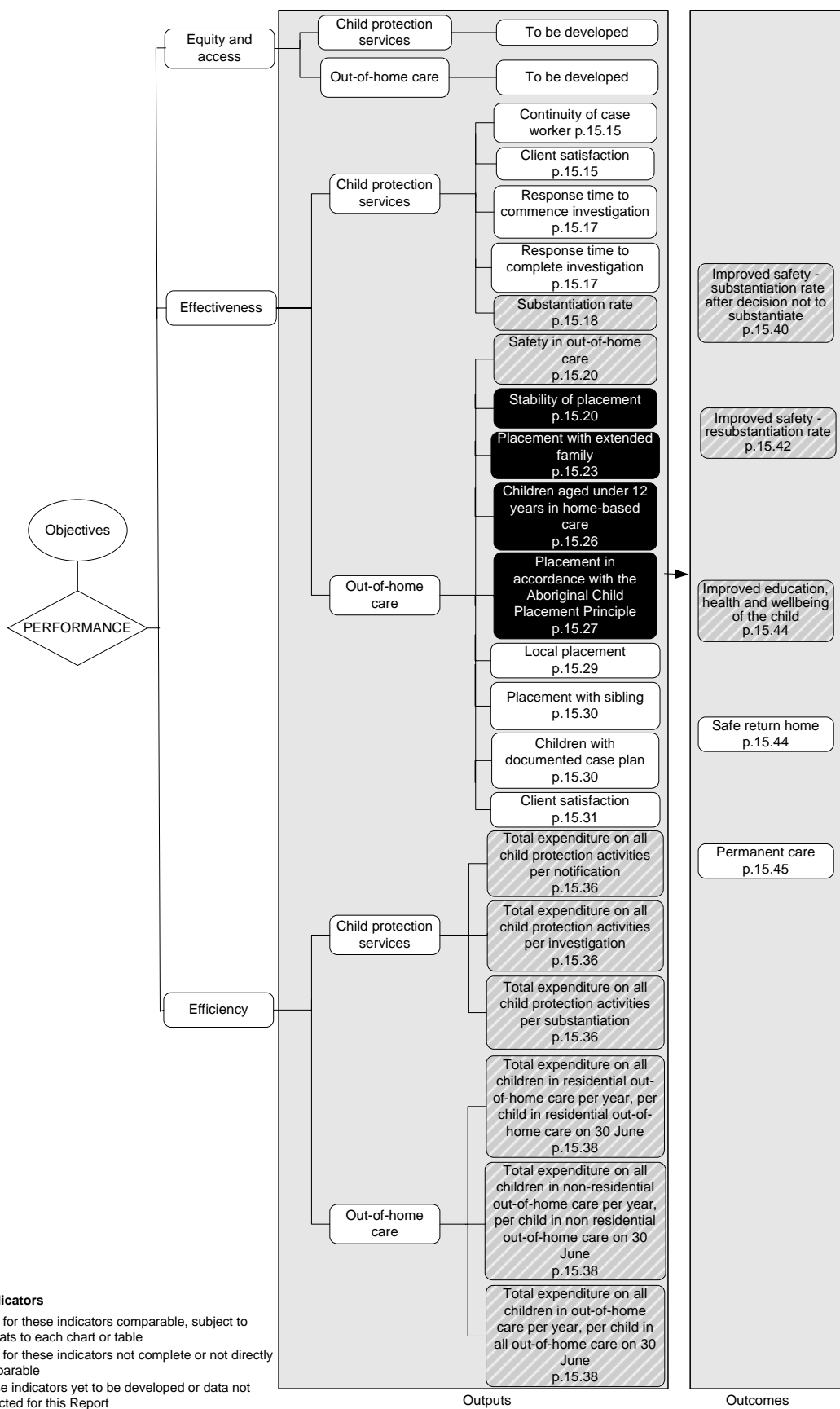


Proportion of children in out-of-home care placed with relatives/kin, by Indigenous status, 30 June 2007^a (p. 15.25)



^a Data and caveats for these figures are available electronically on the CD-ROM enclosed with the Report and from the website for the Review of Government Service Provision (<http://www.pc.gov.au/gsp/reports/rogs/2008>). Data may be subject to revision. The most recent data will be available on the Review website.

Performance indicators for Child protection and out-of-home care services (figure 15.3, p. 15.14)



Developments in reporting since the 2007 Report

A number of developments in reporting have been made since the 2007 Report. These include:

- reporting on juvenile justice services has moved from the Community services preface to this chapter, in recognition of the important role of juvenile justice services in assisting young people experiencing difficulties that involve contact with the criminal justice system
- four jurisdictions are now reporting experimental results for the 'Pathways' project, and indicative unit costs (program dollars per placement day) for out-of-home care services are reported for the first time for most jurisdictions
- a partial measure for the outcome indicator 'Improved education, health and wellbeing of the child' is included in this Report.

[END]

Background information: Lawrence McDonald, Head of Secretariat 03 9653 2178/0421 584 905

Other information: Clair Angel, Media and Publications 02 6240 3239/0417 665 443

Please do not approach other parties for comment before Thursday 31 January 2008.

Media copies of this report are available from Clair Angel on 02 6240 3239.

Hard copies of this publication are available from Pirion/J.S. McMillan (ph: 02 9795 1200 or email custserv@jsmcmillan.com.au). The report will be available via the Internet at <http://www.pc.gov.au/> on the morning of Thursday 31 January 2008.

Tables with an 'A' suffix (eg table 15A.5) are in the attachments on the CD-ROM or on the Review website.