

Under embargo until 1.00am on Thursday, 31 January 2008

For personal use only. Third parties should not be approached until the embargo is lifted.

DELIVERY OF COMMONWEALTH RENT ASSISTANCE (CHAPTER 16)

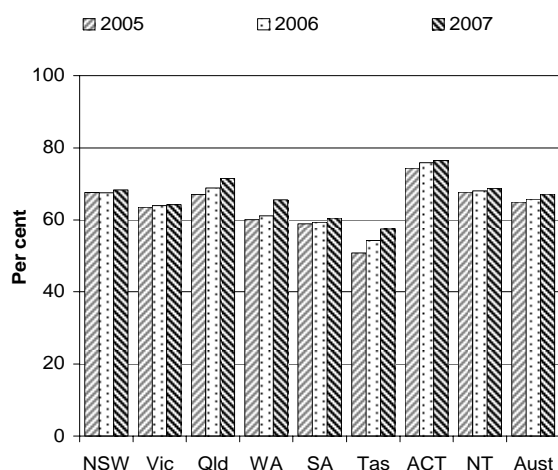
- This chapter reports on the performance of governments in providing Commonwealth State Housing Agreement (CSHA) public and community housing, and State owned and managed Indigenous housing (SOMIH), and on the delivery of Commonwealth Rent Assistance (CRA). This Fact Sheet focuses on the delivery of CRA.
- The Australian Government provided \$2.2 billion for CRA in 2006-07 (p. 16.5).

Objectives of Commonwealth Rent Assistance

- The objective of CRA is to provide income support recipients and low income families in the private rental market with additional financial assistance, in recognition of the housing costs that they face. This assistance should be delivered in an equitable and efficient manner. CRA is also governed by other objectives relating to the primary income support payment (p. 16.27).

Selection of results

Proportion of income units receiving CRA paying enough rent to receive maximum assistance^a (p. 16.76)

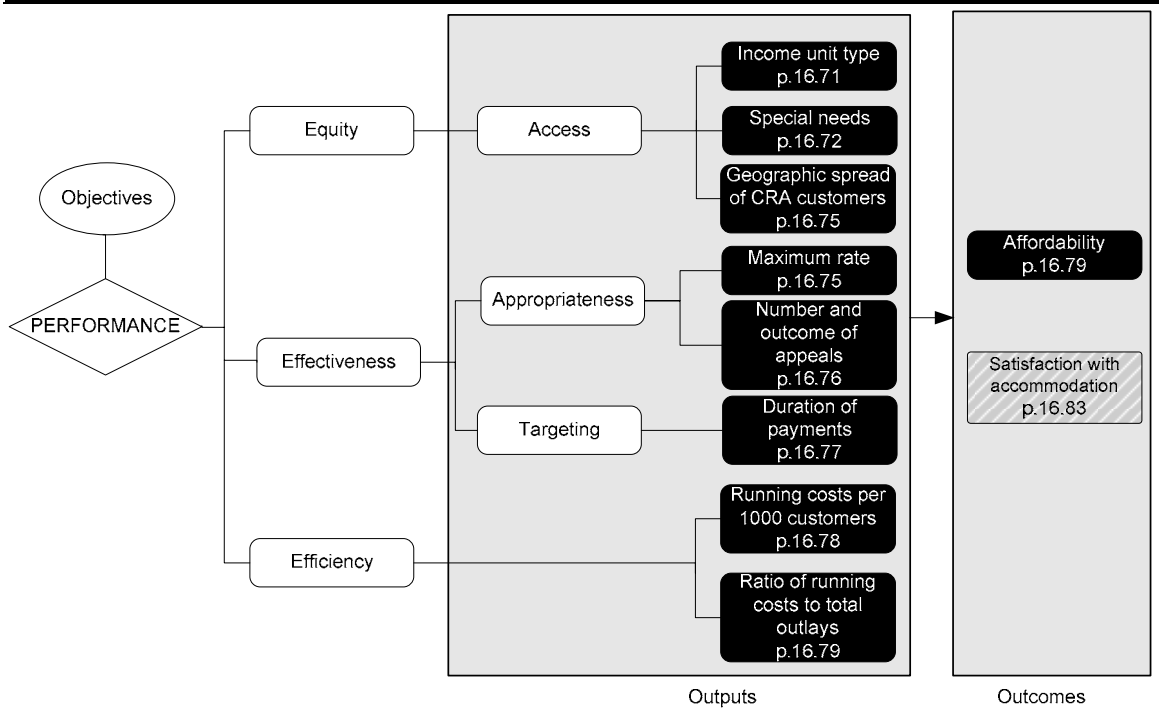


Income units paying more than 30 per cent of income on rent, with and without CRA, 2007^a (p. 16.81)



^a Data and caveats for these figures are available electronically on the CD-ROM enclosed with the Report and from the website for the Review of Government Service Provision (<http://www.pc.gov.au/gsp/reports/rogs/2008>). Data may be subject to revision. The most recent data will be available on the Review website.

Performance indicators for Commonwealth Rent Assistance (figure 16.7, p. 16.27)



Key to indicators

- Text** Data for these indicators comparable, subject to caveats to each chart or table
- Text** Data for these indicators not complete or not directly comparable
- Text** These indicators yet to be developed or data not collected for this Report; chapter contains explanatory note

Developments in reporting since the 2007 Report

- Data for income units receiving disability support pension in capital city and rest of State/Territory were reported for the first time in the 2008 Report.
- In the 2008 Report satisfaction with accommodation was obtained from a voluntary mail survey of 10 000 CRA recipients who were invited to participate, whereas in 2007 satisfaction was derived from the Household Income and Labour Dynamics Australia (HILDA) survey of potential CRA recipients.

[END]

Background information: Lawrence McDonald, Head of Secretariat 03 9653 2178/0421 584 905

Other information: Clair Angel, Media and Publications 02 6240 3239/0417 665 443

Please do not approach other parties for comment before Thursday 31 January 2008.

Media copies of this report are available from Clair Angel on 02 6240 3239.

Hard copies of this publication are available from Pirion/J.S. McMillan (ph: 02 9795 1200 or email custserv@jsmcmillan.com.au). The report will be available via the Internet at <http://www.pc.gov.au/> on the morning of Thursday 31 January 2008.

Tables with an 'A' suffix (eg table 16A.5) are in the attachments on the CD-ROM or on the Review website.